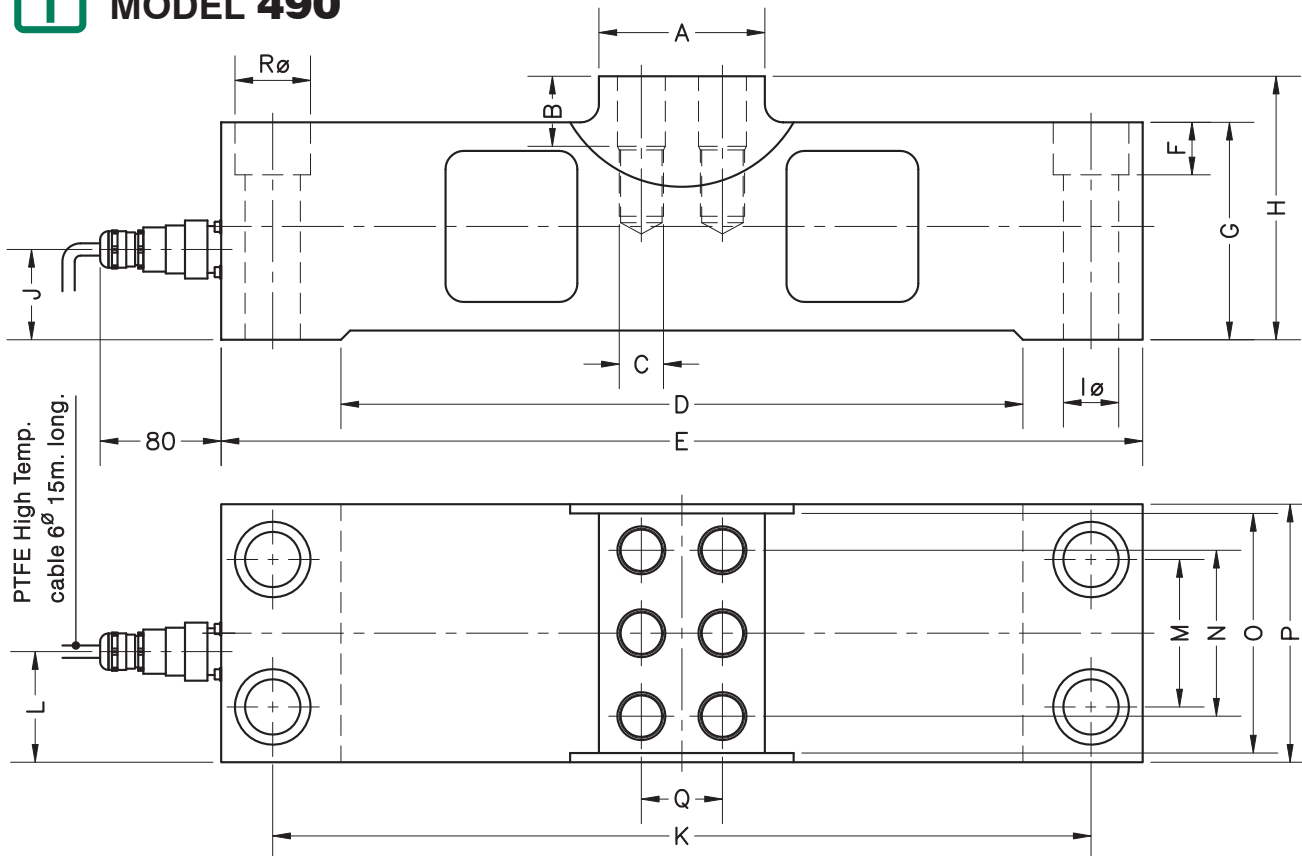


- Double shear load cell
- Accuracy class $\pm 0.05\%$
- Service temperature up to 150°C
- Measuring element from alloy steel with nickel plated treatment
- Input cable connection through hermetic connector
- Protected IP 67 (EN 60529)
- Applications: Ladle turret and ladle ferries scales, scrap bucket, roller table, tundish cars, hopper and silos in high temperature environments for the Metal Industry

- 双剪切梁式称重传感器
- 准确度等级为 $\pm 0.05\%$
- 工作温度 150°C
- 镀镍合金钢测量元件
- 输入电缆有快速接头
- 保护等级 IP 67 (EN 60529)
- 应用：在冶金行业的高温环境下，大包回转台和钢包车，废钢料篮车，辊道，中间包车，料斗和料仓

Model 型号	Nominal capacity 量程 Ln	Accuracy class 准确度等级	Minimum division 最小分度值 vmin	Service load 最大称量 150 % Ln	Safe load limit 安全载荷极限
490 40 t	40 t	$\pm 0.05\%$	8 kg	60 t	100 t
490 50 t	50 t	$\pm 0.05\%$	10 kg	75 t	120 t
490 100 t	100 t	$\pm 0.05\%$	20 kg	150 t	210 t
490 150 t	150 t	$\pm 0.05\%$	30 kg	225 t	290 t
490 200 t	200 t	$\pm 0.05\%$	40 kg	300 t	360 t

MODEL 490

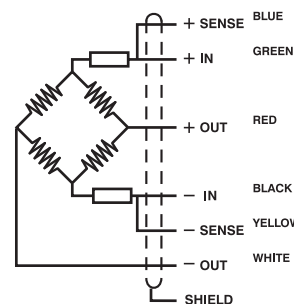


Nom. Load 量程	A	B	C	D	E	F	G	H	I \varnothing	J	K	L	M	N	O	P	Q	R \varnothing	Transp. Weight 重量
40 t	N/A	N/A	M20x30	340	450	N/A	105	N/A	26	45.5	398	47.5	68	75	N/A	110	40	N/A	32 kg
50 t	80	32	M20x30	340	450	25.5	105	130	26	45	398	54	68	75	110	120	40	38	36 kg
100 t	90	38	M24x36	370	500	28.5	118	143	30	49	444	58	80	90	130	140	44	41	54 kg
150 t	90	38	M24x36	410	560	32	133	158	33	65.5	500	67.5	94	102	150	160	44	46	81 kg
200 t	90	40	M24x40	450	620	32	150	175	33	70.5	560	64	114	110	170	180	44	46	116 kg

Dimensions in mm. 单位: mm.

SPECIFICATIONS			技术条件
Nominal capacities (Ln)	40-50-100 150-200	t	量程 (Ln)
Accuracy class (at const. temp.)	±0.05	%	准确度等级
Minimum dead load (Emin)	0	%Ln	最小静载荷
Service load	150	%Ln	最大称量
Safe load limit	≥180	%Ln	安全载荷极限
Total error	< ±0.05	%Sn	综合误差
Repeatability error	< ±0.05	%Sn	重复性误差
Temperature effect: on zero on sensitivity	< ±0.025 < ±0.015	%Sn/5°K %Sn/5°K	温度影响: 零点 灵敏度
Creep error (30 minutes)	< ±0.05	%Sn	蠕变 (30分钟)
Temperature compensation	-10...+100	°C	温度补偿
Temperature limits	-30...+150	°C	温度极限
Nominal sensitivity (Sn)	2 ±0.25%	mV/V	灵敏度
Nominal input voltage	10	V	激励电压
Maximum input voltage	15	V	最大激励电压
Input impedance	800 ±30	Ω	输入阻抗
Output impedance	700 ±5	Ω	输出阻抗
No load output	< ±2	%Sn	空荷输出
Insulation resistance	> 5000	MΩ	绝缘电阻
Maximum deflection (at Ln)	0.6-1	mm	最大变形位移 (量程内)

ELECTRICAL CONNECTION
电气连接:



«SENSES»: 2 additional wires to maintain a constant voltage supply at the load cell when used with proper instrumentation. Use specially when long wires and wide temperature range.
SHIELD: Not connected to transducer body.

(感应): 传感器与仪表一起使用时, 增加两条感应线, 以保证传感器拱桥电压的稳定; 电缆较长及温度范围较大时, 更应使用。

屏蔽: 不与传感器外壳连接。