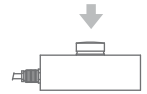




Capacity from 250 kg to 100000 kg



MOUNTING KITS



- 17-4 PH STAINLESS STEEL (on request AISI 420 stainless steel version; not OIML approved)
- COMBINED ERROR $\leq \pm 0.03\%$ (0.02% C3)
- PROTECTION CLASS IP68

CAPACITY	kg	ACCURACY CLASS		OIML	IECEx	Ex	EAC	NET WEIGHT OF LOAD CELL (kg)	CODE
250		-	-			•	•	1.1	CBL250
500		-	-			•	•	1.1	CBL500
1000		-	-			•	•	1.1	CBL1000
2500		C2	C3			•	•	1.1	CBL2500
5000		C2	C3			•	•	1.1	CBL5000
7500		C2	C3			•	•	1.1	CBL7500
10000		C2	C3			•	•	1.1	CBL10000
12500		-	C3 *			•	•	1.6	CBL12500
15000		-	-			•	•	2.1	CBL15000
30000		-	-			•	•	3.8	CBL30000
50000		-	-			•	•	8.6	CBL50000
100000		-	-			•	•	9.1	CBL100000

ON REQUEST

(*) Except for the capacity of 12500kg, which is already OIML R60 C3 approved

CERTIFICATIONS



OIML R60 C2 / C3 (see capacities table)

CERTIFICATIONS ON REQUEST



Declaration of conformity + IP69K marking protection rating

Water protection when cleaning high pressure / steam jet (Test: pressurized hot water is sprayed from a distance of 150 mm).
Water pressure 100 bar; temperature 80 °C; test duration 250 seconds (Reference standard DIN 40050-9).



Calibration report (ACCREDIA LAT traceability)



ATEX II 1GD (zone 0-1-2-20-21-22)



IECEx II 1GD (zone 0-1-2-20-21-22)



OIML R60 C3 (see capacities table)



Complies with the Eurasian Custom Union regulations (Russia, Belarus, Kazakhstan)

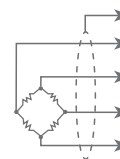
TECHNICAL FEATURES

Material	17-4 PH stainless steel		
OIML R60 Accuracy class • Verification intervals	-	C2 • 2000	C3 • 3000
Nominal load (E max)	250 - 500 - 1000 - 15000 30000 - 50000 - 100000	2500 - 5000 7500 - 10000	2500 - 5000 - 7500 10000 - 12500
Minimum verification interval (V min)	-	E max / 15000	
Combined error	≤ ±0.03%	≤ ±0.03%	≤ ±0.02%
Protection class	IP68		
Rated output	2 mV/V ±0.1%	Input resistance	700 Ω ±10
Temperature effect on zero	0.005% °C	Output resistance	700 Ω ±10
Temperature effect on span	0.003% °C	Zero balance	±1%
Compensated temperature range	-10 °C / +50 °C	Insulation resistance	>10000 MΩ
Operating temperature range	-20 °C / +70 °C	Safe overload (% of full scale)	150%
Creep at nominal load after 4 hours	0.03%	Ultimate overload (% of full scale)	300%
Max supply voltage without damage	15 V	Deflection at nominal load	0.4 mm

ELECTRICAL CONNECTIONS

Cable length	▲ 5 m (250-10000 kg) 10 m (12500-100000 kg)
Cable diameter	5 mm
Cores	4/6 x 0.25 mm ²

▲ On request: 10 m long cable version



SHIELD	
+ SIGNAL	GREEN
+ EXCITATION ■ + REF./SENSE	RED BLUE
- SIGNAL	WHITE
- EXCITATION ■ - REF./SENSE	BLACK YELLOW

■ where provided

OPTIONS ON REQUEST






DESCRIPTION

10 m long cable version

AISI 420 stainless steel load cell version (not OIML approved)

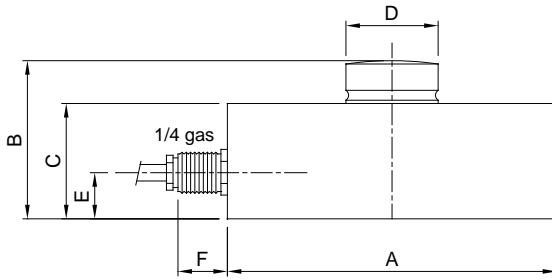
Two redundant strain gauges Wheatstone bridges (350 Ω) with two output cables; for dual safety systems

COMPLEMENTARY ACCESSORIES

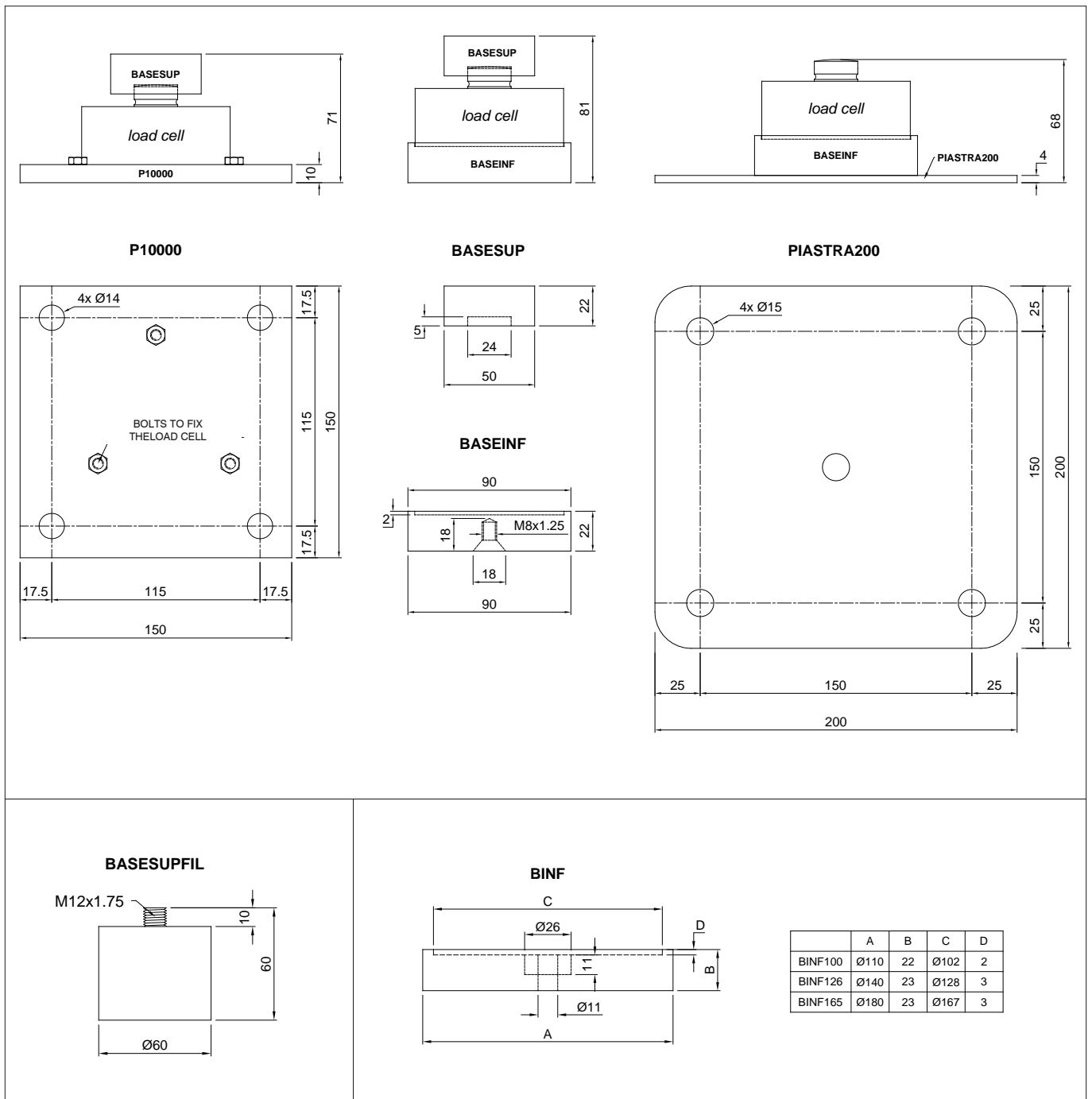
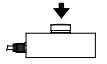
	DESCRIPTION	CODE
	AISI 304 stainless steel threaded upper base for compression load cells. M12x1.75 mm	BASESUPFIL
	AISI 304 stainless steel turned lower base for compression load cells. Ø110x22 mm Ø140x23 mm Ø180x23 mm	BINF100 BINF126 BINF165
	Lower plate and turned upper base in AISI 304 stainless steel. Load cell capacity: from 250 to 15000 kg.	BASESUP P10000
	Turned upper and lower bases in AISI 304 stainless steel. Load cell capacity: from 250 to 15000 kg.	BASESUP BASEINF
	Lower plate and turned lower base in AISI 304 stainless steel. Load cell capacity: from 250 to 15000 kg.	BASEINF PIASTRA200

COMPRESSION LOAD CELLS - LOW PROFILE

DIMENSIONS (mm)



kg	250	1500	30000	50000
A	Ø82	Ø100	Ø126	Ø165
B	44	48	54	80
C	32	35	40	60
D	Ø22	Ø28	Ø35	Ø60
E	14	14	14	26
F	15	15	15	15



	A	B	C	D
BINF100	Ø110	22	Ø102	2
BINF126	Ø140	23	Ø128	3
BINF165	Ø180	23	Ø167	3

Rev. 00 del 12/03/2015

The Company reserves the right to make changes to the technical data, drawings and images without notice.