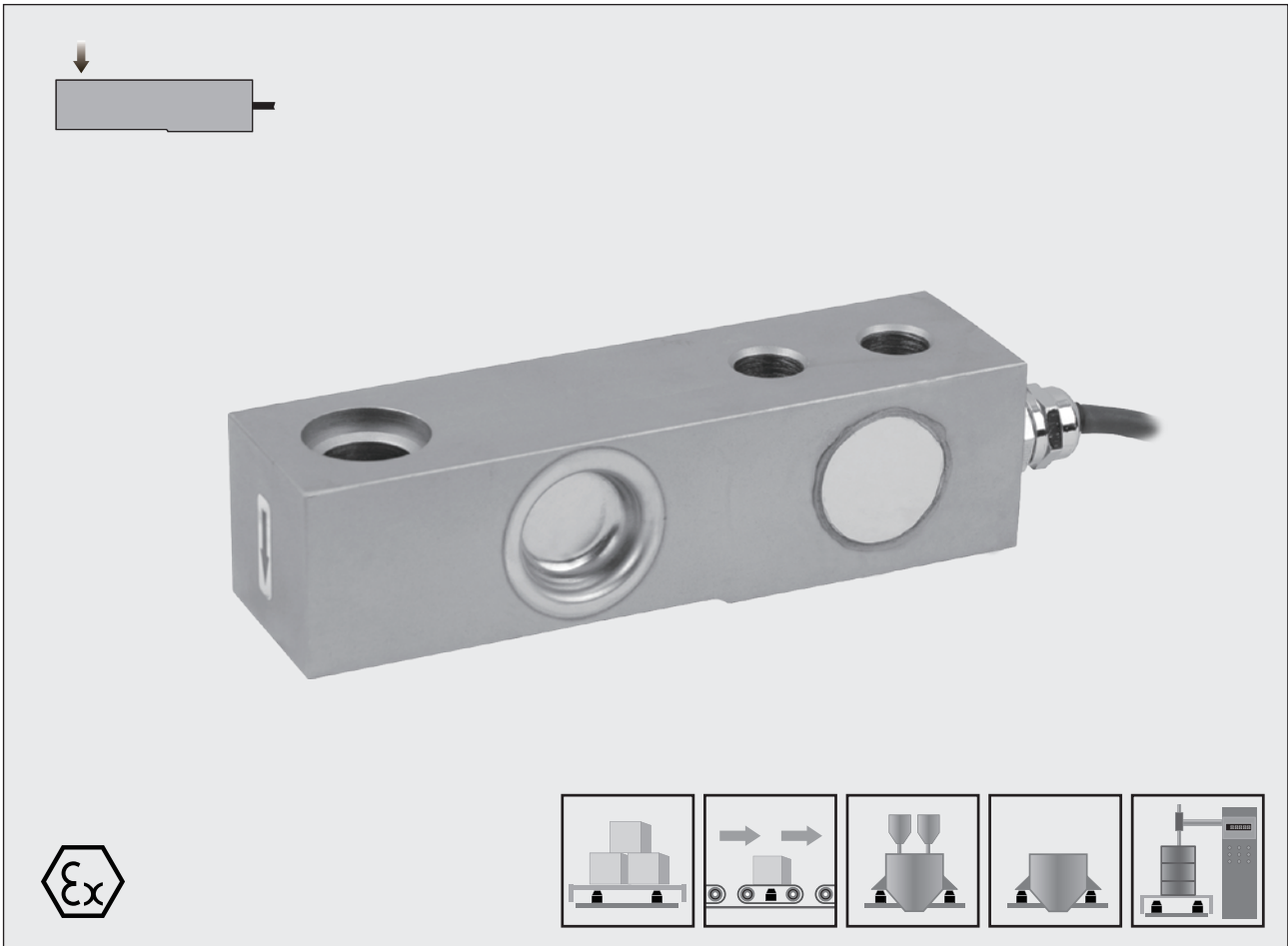


Type SBSZ Load Cell

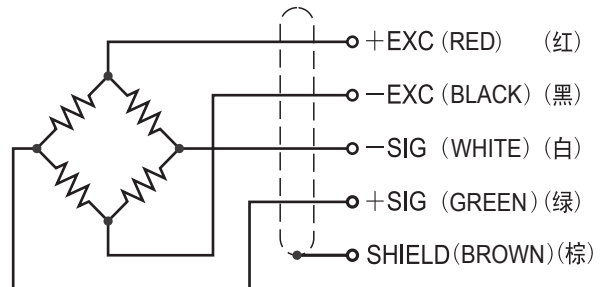


Features 主要特点

- Single ended shear beam load cell
- Stainless steel construction
- Hermetically sealed
- High accuracy
- High stability
- Easy to install
- Suitable for floor scales, blending & mixing systems, belt scales and batching Systems, etc.
- 悬臂梁式
- 优质不锈钢材质
- 全密封焊接
- 高精度
- 高稳定性
- 安装简便、快速
- 适用于平台秤、搅拌站、皮带秤和配料秤等

Schematic 接线方式

- | | | | |
|---------|----------|------|------|
| Red : | + input | 红色 : | + 激励 |
| Black : | - input | 黑色 : | - 激励 |
| Green : | + output | 绿色 : | + 信号 |
| White : | - output | 白色 : | - 信号 |
| Brown : | shield | 棕色 : | 屏蔽 |



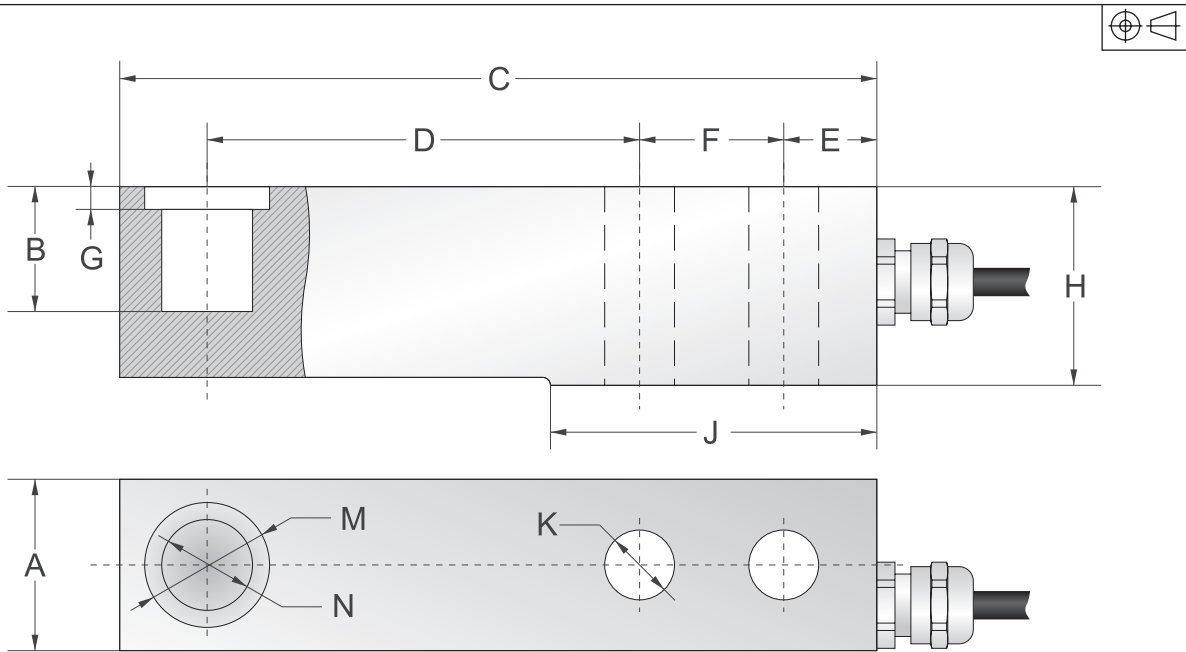
Capacities 量程

250kg, 500kg, 1000kg, 2000kg, 3000kg, 5000kg, 10000kg, 13500kg, 20000kg

Single Ended Shear Beam Series

Single Ended Shear Beam

Dimensions 尺寸



Capacity/量程		A	B	C	D	E	F	G	H	J	K	M	N
0.25t/0.5t/1t	mm	30.7	17	133.4	76.2	16.4	25.4	4.8	30	57.9	12.7	22	15.9
2t	mm	36.8	23	136.7	76.2	16.7	25.4	9.5	36.6	57.9	12.7	22	15.9
3t	mm	39	23	139.7	79.2	16.7	25.4	9.5	36.6	57.9	15	22	15.9
5t	mm	42.9	29.4	171.5	95.2	16.7	38.1	11	43	73.8	19	34.9	22.2
10t/13.5t	mm	60.4	20.6	279.4	139.7	25.4	82.6	8.6	66.7	133.4	27	47.6	31.8
20t	mm	69.9	24.2	317.5	158.8	31.8	88.9	9.5	82.6	152.4	33.3	54	38.1

Specification 技术参数

Rated Output	额定输出	2.0mV/V ±0.1%
Zero Balance	零点平衡	±1% of rated output
Creep after 30 minutes	蠕变	±0.03% of rated output
Nonlinearity	非线性	±0.03% of rated output
Hysteresis	滞后	±0.03% of rated output
Repeatability	重复性	±0.03% of rated output
Temp. effect on output	灵敏度温漂	≤0.002% of applied output/°C
Temp. effect on zero	零点温漂	≤0.002% of rated output/°C
Safe Temp. Range	可用温度范围	-10°C to + 70°C
Temp. Compensated	温度补偿范围	-10°C to + 40°C
Safe Overload	安全载荷	150%
Input Impedance	输入阻抗	387 ohm ± 20 ohm
Output Impedance	输出阻抗	350 ohm ± 5 ohm
Insulation Resistance	绝缘阻抗	≥5000 M ohm (50V DC)
Rated Excitation	推荐激励电压	10V DC/AC
Maximum Excitation	最大激励电压	15V DC/AC
Cable Length	导线长度	6m(0.25t~5t) / 9.5m(10t~13.5t) / 13m(20t)
Cable Color Code	导线颜色	Red(+ E) Black(- E) Green(+ S) White(- S)