

# PW15A...

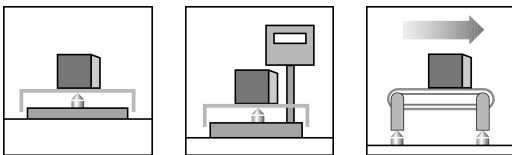
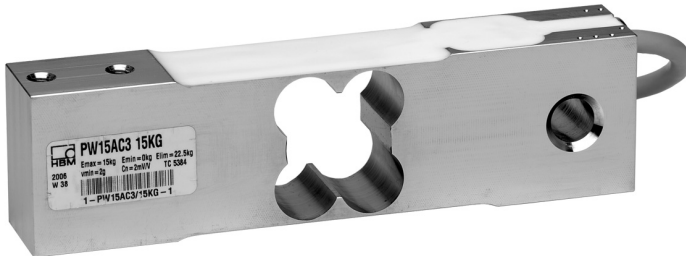
## Single point load cell

### Special features

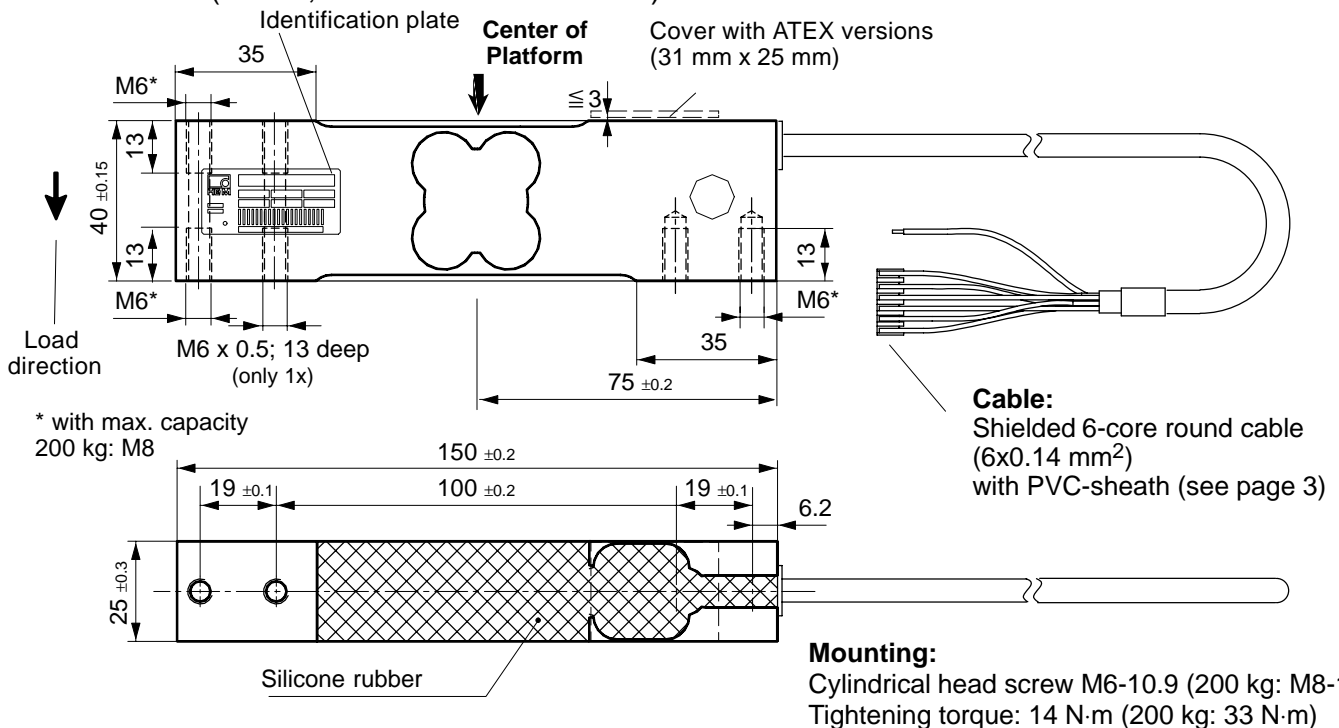
- Stainless steel
- Max. Capacities: 7.5 kg ... 200 kg
- OIML R60 approval
- Off center load compensated (OIML R76)
- Protection class IP67 (acc. to EN 60 529)
- 6-wire-technology
- Meets EMC standards (EN 45 501)

### Optional:

- Reduced minimum LC verification interval ( $v_{min}$ ) for multi range applications
- Explosion proof versions
- different cable lengths
- Aligned output, suitable for connection in parallel



### Dimensions (in mm; 1 mm= 0.03937 inches)



## Specifications

Type	PW15A...									
Accuracy class <sup>1)</sup>	C3, C3MR									
Max. number of load cell interv. (n <sub>LC</sub> )	3000									
Maximum capacity (E <sub>max</sub> ) <sup>2)</sup>	kg	7.5	15	20	30	50	75	100	150	200
Min. LC verific. interval (v <sub>min</sub> ) (Accuracy class C3)	g	1	2	5	5	10	10	20	20	50
Temperature effect on zero balance (TK <sub>0</sub> ), (Accuracy class C3)	% of C <sub>n</sub> / 10 K	± 0.0186	± 0.0186	± 0.0350	± 0.0233	± 0.0280	± 0.0186	± 0.0280	± 0.0186	± 0.0350
Min. LC verific. interval (v <sub>min</sub> ), (Accuracy class C3MR)	g	0.5	1	2	2	5	5	10	10	20
Temperature effect on zero balance (TK <sub>0</sub> ), (Accuracy class C3MR)	% of C <sub>n</sub> / 10 K	± 0.0093	± 0.0093	± 0.0140	± 0.0093	± 0.0140	± 0.0093	± 0.0140	± 0.0093	± 0.0140
Maximum platform size	mm	500 x 400								
Sensitivity (C <sub>n</sub> )	mV/V	2.0 ± 0.2 (Option 6: A = 2 mV/V ± 0.1 %)								
Zero balance		0 ± 0.1								
Temperature effect on sensitivity (TK <sub>C</sub> ) <sup>3)</sup> Temperature range: +20 ... +40°C [+68 ... +104°F] -10 ... +20°C [+14 ... +68°F]	% of C <sub>n</sub> / 10 K	± 0.0175 ± 0.0117								
Hysteresis error (d <sub>hy</sub> ) <sup>3)</sup>	% of C <sub>n</sub>	± 0.0166								
Non-linearity (d <sub>lin</sub> ) <sup>3)</sup>		± 0.0166								
Minimum dead load output return (DR)		± 0.0166								
Off center load error <sup>4)</sup>		± 0.0233								
Input resistance (R <sub>LC</sub> )	Ω	380 ± 15								
Output resistance (R <sub>0</sub> )		359 ± 5 (Option 6: A = 359 Ω ± 0.3 Ω)								
Reference excit. voltage (U <sub>ref</sub> )	V	5								
Nom. range of excit. volt. (B <sub>U</sub> )		1 ... 12								
Max. excitation voltage		15								
Insulation resist. (R <sub>is</sub> ) with 100 V <sub>DC</sub>	GΩ	> 1								
Nominal temp. range (B <sub>T</sub> )	°C [°F]	-10 ... +40 [+14 ... +104°F]								
Service temp. range (B <sub>tu</sub> )		-10 ... +50 [+14 ... +122°F]								
Storage temp. range (B <sub>tl</sub> )		-25 ... +70 [-13 ... +158°F]								
Safe load limit (E <sub>L</sub> ) *)	% of E <sub>max</sub>	150								
*) at max. eccentricity	mm	160								
Lateral load limit (E <sub>ld</sub> ), static	% of	300								
Breaking load (E <sub>d</sub> )	E <sub>max</sub>	300								
Deflect. at E <sub>max</sub> (s <sub>nom</sub> ), app.	mm	< 0.5								
Weight (G), approx.	kg	1.0								
Protection class acc. to EN60529 (IEC529)		IP67								
Material: Measuring element		Stainless steel								
Coating		Silicone rubber								
Cable sheath		PVC								

<sup>1)</sup> According to OIML R60 with P<sub>LC</sub> = 0.7

<sup>2)</sup> Max. eccentric load according to OIML R76

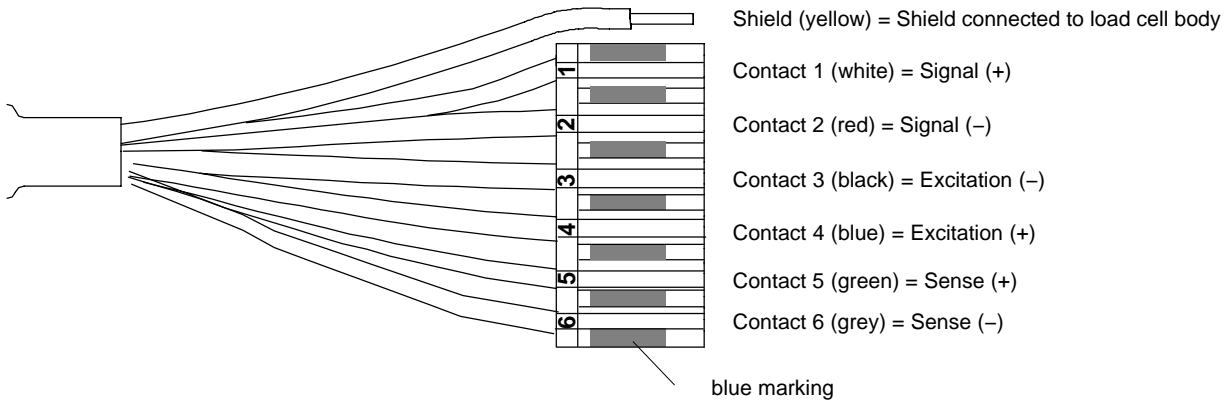
<sup>3)</sup> The data for Non-linearity (d<sub>lin</sub>), Hysteresis error (d<sub>hy</sub>) and Temperature effect on sensitivity (TK<sub>C</sub>) are typical values. The sum of these data meets the requirements according to OIML R60.

<sup>4)</sup> Eccentric error according to OIML R76 class

## Wiring code

Connection with 6 wire cable (selectable cable length: 1.5 m; 3 m; 6 m, 12 m)

Detailed description of the Pancon plug (CE100F26-6), 6-pole





### Ordering codes

#### PW15A... (Stainless steel)

Type	PW15A	
Accuracy	C3 (OIML)	
Note	Cable length 3m (6 wire)	
Capacity	Order no.	
7.5kg	1-PW15AC3/7.5KG-1	
15kg	1-PW15AC3/15KG-1	
20kg	1-PW15AC3/20KG-1	
30kg	1-PW15AC3/30KG-1	
50kg	1-PW15AC3/50KG-1	
75kg	1-PW15AC3/75KG-1	
100kg	1-PW15AC3/100KG-1	
150kg	1-PW15AC3/150KG-1	
200kg	1-PW15AC3/200KG-1	

#### K-PW15A-... (Stainless steel), optional versions

Order no.		
<b>K-PW15A</b>		
Code	Option 1: Mechanical version	
<b>N</b>	Standard	
Code	Option 2: Accuracy	
<b>C3</b>	C3 (OIML)	
<b>MR</b>	C3-MR (OIML)	
Code	Option 3: Capacity	
<b>7.5</b>	7.5kg	
<b>15</b>	15kg	
<b>20</b>	20kg	
<b>30</b>	30kg	
<b>50</b>	50kg	
<b>75</b>	75kg	
<b>100</b>	100kg	
<b>150</b>	150kg	
<b>200</b>	200kg	
Code	Option 4: Ex protection	
<b>N</b>	non Ex	
<b>1+21</b>	ATEX Zone 1 + 21 and FM 	
<b>2+22</b>	ATEX Zone 2 + 22 (non-conductive dust)	
Code	Option 5: Cable length	
<b>1.5</b>	1.5m	
<b>3</b>	3m	
<b>6</b>	6m	
<b>12</b>	12m	
Code	Option 6: Miscellaneous	
<b>N</b>	without	
<b>A</b>	2mV/V ±0.1% / 359 Ohms ±0.3 Ohms (aligned output, suitable for connection in parallel)	
<p>K-PW15A - <b>N</b> - <input type="checkbox"/> - <input type="checkbox"/> - <input type="checkbox"/> - <input type="checkbox"/> - <input type="checkbox"/> - <input type="checkbox"/> - <input type="checkbox"/></p>		